

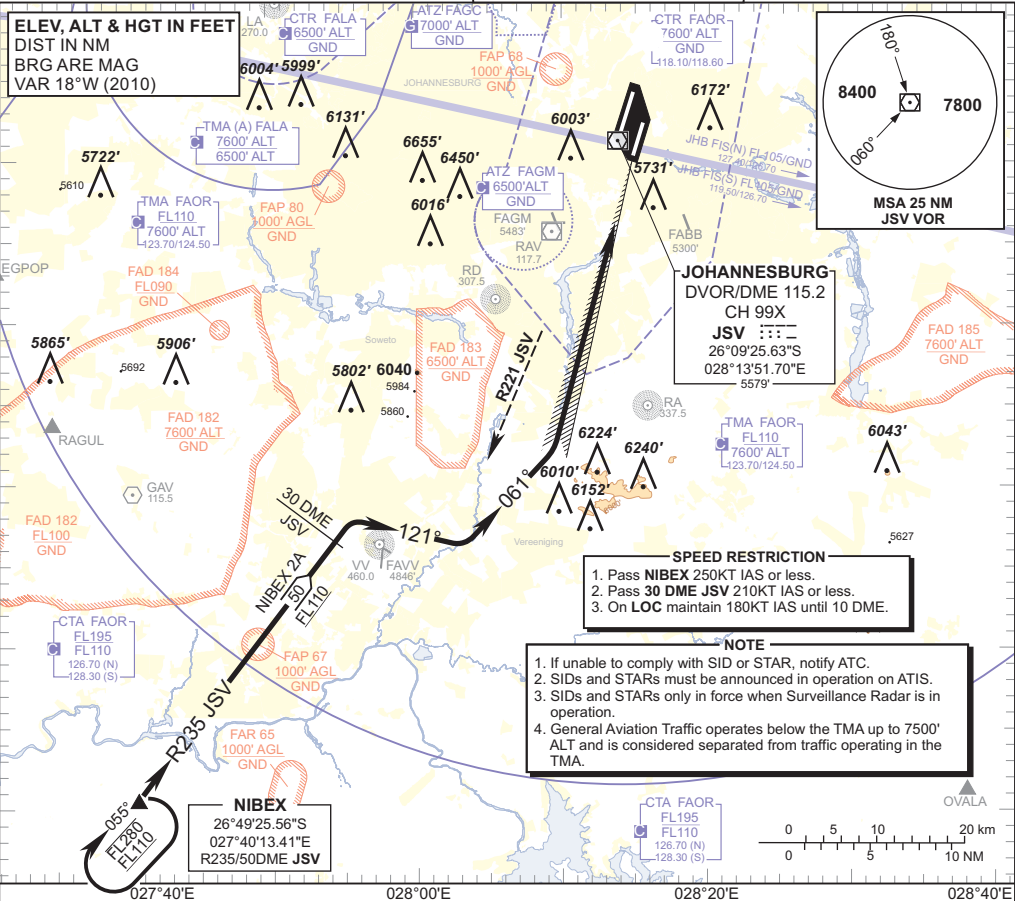
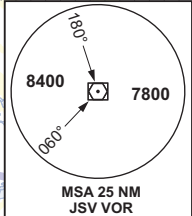
STANDARD ARRIVAL CHART - INSTRUMENT (STAR)

TRANSITION ALTITUDE
8000'
TRANSITION LEVEL
ATC

RADAR APP S 124.50 TWR E 118.60
E 124.50 W 118.10
W 123.70 ATIS 126.20
DIR 121.40 115.20
ACC N 126.70 SMC 121.90

JOHANNESBURG
(O.R. TAMBO INTERNATIONAL)
RWY 03R
NIBEX 2A

ELEV, ALT & HGT IN FEET
DIST IN NM
BRG ARE MAG
VAR 18°W (2010)



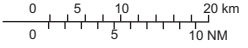
SPEED RESTRICTION

1. Pass NIBEX 250KT IAS or less.
2. Pass 30 DME JSV 210KT IAS or less.
3. On LOC maintain 180KT IAS until 10 DME.

NOTE

1. If unable to comply with SID or STAR, notify ATC.
2. SIDs and STARs must be announced in operation on ATIS.
3. SIDs and STARs only in force when Surveillance Radar is in operation.
4. General Aviation Traffic operates below the TMA up to 7500' ALT and is considered separated from traffic operating in the TMA.

NIBEX
26°49'25.56\"S
027°40'13.41\"E
R235/50DME JSV



NIBEX 2A
RWY 03R

Leave NIBEX on R235 JSV (INBD). At 30 DME JSV turn right onto track 121°. Crossing R221 JSV turn left onto track 061° to intercept the ILS LOC RWY 03.

COMMUNICATION FAILURE PROCEDURE (Squawk 7600)

Before NIBEX: Proceed to NIBEX and enter the NIBEX hold. Hold at last assigned level for minimum 5 MIN then descend to FL130 in the hold or maintain last assigned level if below FL130. Leave NIBEX on the "After NIBEX" Communication Failure Procedure.

After NIBEX: Leave NIBEX on R235 JSV (INBD). At 30 DME JSV turn right onto track 121° and descend to FL100. Crossing R221 JSV descend to FL090 and turn left onto track 061° to intercept the ILS LOC RWY 03R. Adjust to 9000' ALT and complete a straight-in ILS APCH and land RWY 03R.

Note: Aircraft entering the TMA at FL110 and below are to enter the NIBEX hold at last assigned level and continue on the routing for the NIBEX 2A STAR.

Caution: Holding patterns below FL110 will be conducted partially outside controlled airspace.

In the event of a missed approach with the intention of diverting to an alternate aerodrome, proceed as follows:

- To the North and North-West: Follow the routing for the VASUR 3A SID.
- To the East and North-East: Follow the routing for the EGMEN 2A SID (Jet ACFT) or EXOBI 1A SID (Turboprop ACFT).
- To the South-East: Follow the routing for the APDAK 3A SID.
- To the West and South-West: Follow the routing for the RAGUL 3A SID.

CHANGE: SPEED RESTRICTION BLOCK